

PRODUCT:	WIRE GUIDE AWNINGS	DEPARTMENT:	Outdoor		
MS No.:	MS C 5.14	ISSUE DATE:	Dec 2019	Issue No:	14

Orig. Issue Date:	01-July-09	Reviewer:	Mark Khong
--------------------------	-------------------	------------------	------------

Location	Computer File:	\\Common\contract\AA - Products\Outdoor Product Specification - MS C 5.14 Wire Guide Awning
	Hard Copies:	<ul style="list-style-type: none"> ▪ Production Office (Master Copy) ▪ Outdoor Work Area File

Document Revisions—		
Date	Description of change	Originated by—
01-July-09	Create Specification	Mark Khong
Feb 2011	Remove side hems from Screen fabrics	Mark Khong
Oct 2011	Variation to Headbox Specification & Guide Wire length	Krishna
Nov 2011	Side hems on all Screen fabrics except Outlook Mode & VWeave Plus fabrics, unless requested as No side Hems	Krishna
Jan 2012	Rollertube deduction altered from 55mm to 53mm	Krishna
Oct 2012	Added Cassette	Krishna
Nov 2012	Altered Cut Drop from 400mm to 300mm	Krishna
Jan 2013	Altered Exploded diagram	Krishna
May 2013	Altered Top roller diameter specifications.	Krishna
Aug 2013	Altered fabric cutting process, sealing the edges & Join types.	Krishna
Sep 2013	Updated gear box ratio from 2.7:1 to 3.5:1	Krishna
Nov 2014	Replaced Wheat with Precious Silver Pearl	Krishna
De 2019	Replaced Proteger with new Outdoor Cassette & removed Roll formed Metal Headbox. Removed Masonary kit. Upgraded top & bottom Bush componentry. Upgraded wire guide runners to s/steel Eye nut Coach screw. Upgraded deck plate.	Krishna

Approval—			
Stakeholder	Position	Signature	Date

AUTHORISED BY:	Andrew Rundle (Sales Manager)	REVIEWER:	Mark Khong		Page:	1 of 11
	Krishna (Prod. Manager)	Review Date:	Nov 2020	NOT VALID after:	Nov 2020	

PRODUCT:	WIRE GUIDE AWNINGS	DEPARTMENT:	Outdoor		
MS No.:	MS C 5.14	ISSUE DATE:	Dec 2019	Issue No:	14

Krishna Ratnakaram	Product Manager		
Andrew Rundle	Marketing Manager		



Product Specification

MS C 5.14 Wire Guide

AUTHORISED BY:	Andrew Rundle (Sales Manager)	REVIEWER:	Mark Khong		Page:	2 of 11
	Krishna (Prod. Manager)	Review Date:	Nov 2020	NOT VALID after:	Nov 2020	

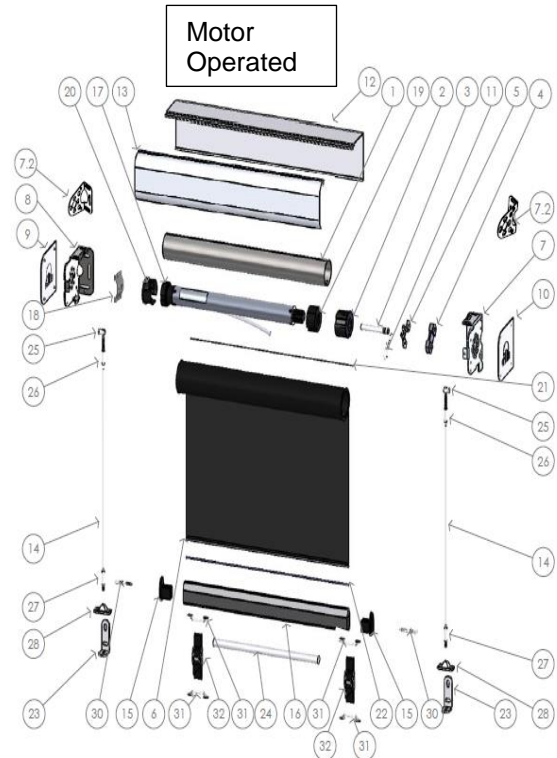
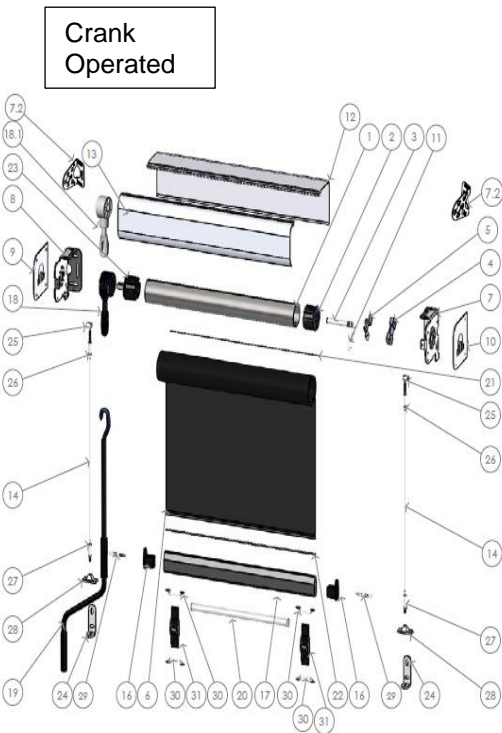
PRODUCT:	WIRE GUIDE AWNINGS	DEPARTMENT:	Outdoor
MS No.:	MS C 5.14	ISSUE DATE:	Dec 2019
		Issue No:	14



PRODUCT SPECIFICATION

Product Name

Wire Guide Awning



ID	PART NUMBER	DESCRIPTION	QTY	ID	PART NUMBER	DESCRIPTION	QTY
1	6.619.. /6.8000..	Top Roller Tube	1	17	6.8521..	Bottom Rail	1
2	6.8016..	Idler End	1	18	6.8002..	9" Gearbox	1
3	6.851500	Pivot Pin	1	18.1	6.80021	2.7" Gearbox	1
4	6.9001605	Hood Spacer Block	1	19	6.800...	Crank Handle	1
5	6.851500	Pivot Plate	1	20	6.9001718	Bottom Rail Weight	1
6	FABRIC	1	21	6.62801	3.6mm Spline	1
7	6.90405..	"Protecta Bracket With Hood Tabs RH"	1	22	6.62806	6mm Spline - Plastic	1
7.2	6.85...	Universal Stainless Steel 65mm Bracket	2	23	6.8002..	Drive End	1
8	6.90405..	"Protecta Bracket With Hood Tabs LH"	1	24	6.851220	Wire Guide L Bracket	2
9	6.90404..	Protecta Bracket Cover LH	1	25	6.851212	"Stainless Barrel Nut 17mm M6 Thread"	2
10	6.90404..	Protecta Bracket Cover RH	1	26	6.851212	Rapid Lock Swageless Stud M6 x 35	2
11	6.851500	Plate Clip	1	27	6.851212	Rapid Lock Swageless Stud M6 x 15	2
12	6.90401.. / 8	Protecta Hooding Back	1	28	6.801245	Deck Hinge	2
13	6.90408..	Protecta Half Hooding Front	1	29	6.851212	Eye Nut Coach Screw	2
14	6.801100	Wire Guide Cable	2	30	6.7980..	Breeching Staple	4
16	6.8522..	Bottom Rail Wire Guide End Cap	2	31	6.765..	Awning Straps Webbed with Buckle	2

ID	PART NUMBER	DESCRIPTION	QTY	ID	PART NUMBER	DESCRIPTION	QTY
1	6.619.. /6.8000..	Top Roller Tube	1	16	6.8521..	Bottom Rail	1
2	6.8016..	Idler End	1	17	Motor	1
3	6.851500	Pivot Pin	1	18	Motor Bracket	1
4	6.9001605	Hood Spacer Block	1	19	Motor Drive	1
5	6.851500	Pivot Plate	1	20	Motor Crown	1
6	FABRIC	1	21	6.62801	3.6mm Spline	1
7	6.90405..	Protecta Bracket With Hood Tabs RH	1	22	6.62806	6mm Spline - Plastic	1
7.2	6.85...	Universal Stainless Steel 65mm Bracket	2	23	6.851220	Wire Guide L Bracket	2
8	6.90405..	Protecta Bracket With Hood Tabs LH	1	24	6.9001718	Bottom Rail Weight	1
9	6.90404..	Protecta Bracket Cover LH	1	25	6.851212	Stainless Barrel Nut 17mm M6 Thread	2
10	6.90404..	Protecta Bracket Cover RH	1	26	6.851212	Rapid Lock Swageless Stud M6 x 35	2
11	6.851500	Pivot Pin and Plate Clip	1	27	6.851212	Rapid Lock Swageless Stud M6 x 15	2
12	6.90401.. / 8	Protecta Hooding Back	1	28	6.801245	Quick Fit Wire Guide Deck Hinge	2
13	6.90408..	Protecta Half Hooding Front	1	29	6.851212	Eye Nut Coach Screw	2
14	6.801100	Wire Guide Cable	2	30	6.7980..	Breeching Staple	4
15	6.8522..	Bottom Rail Wire Guide End Cap	2	31	6.765..	Awning Straps Webbed with Buckle	2

AUTHORISED BY:	Andrew Rundle (Sales Manager)	REVIEWER:	Mark Khong	Page:	3 of 11
	Krishna (Prod. Manager)	Review Date:	Nov 2020	NOT VALID after:	Nov 2020

PRODUCT:	WIRE GUIDE AWNINGS	DEPARTMENT:	Outdoor		
MS No.:	MS C 5.14	ISSUE DATE:	Dec 2019	Issue No:	14

1. General Specifications

BLIND DIMENSIONS	Minimum (mm)	Maximum (mm)
Width	600	4200
Drop	600	2800

NOTES—

- **Minimum width for any motorised awning is 750mm**
- Where blinds are **ordered outside this range**, customers must be referred to the Production Department. Blinds ordered that are outside this range should not be made without authorisation.

OBM = Outside Box Measurement

CLOTH

Pattern	<ul style="list-style-type: none"> As per Work Order Pattern must be centred across the width of the Blind 			
Colour	<ul style="list-style-type: none"> As per Work Order 			
Cut Width	<u>From OBM</u>	CRANK	MOTORISED	
	S/steel brackets	Less 20mm	Less 12mm	
	Cassette	Less 24mm	Less 32mm	
Cut Drop	<ul style="list-style-type: none"> Drop + 300mm 			
Spline to spline	<ul style="list-style-type: none"> Drop + 300mm 			
Scallop	<ul style="list-style-type: none"> Scallop is NOT offered with this product 			
Panel size	<ul style="list-style-type: none"> Minimum width = 300mm 			
				Tolerance
Cloth Width	<u>From OBM</u>	CRANK	MOTORISED	
	S/steel brackets	Less 80mm	Less 72mm	± 3 mm
	Cassette	Less 84mm	Less 92mm	
Blind Drop	<ul style="list-style-type: none"> As per Work Order (measured to bottom of bottom rail plus 50 mm) 			

AUTHORISED BY:	Andrew Rundle (Sales Manager)	REVIEWER:	Mark Khong		Page:	4 of 11
	Krishna (Prod. Manager)	Review Date:	Nov 2020	NOT VALID after:	Nov 2020	

PRODUCT:	WIRE GUIDE AWNINGS	DEPARTMENT:	Outdoor		
MS No.:	MS C 5.14	ISSUE DATE:	Dec 2019	Issue No.:	14

CASSETTE
(WHERE FITTED)

Profile	<ul style="list-style-type: none"> • 2 piece. L shape back & Curved Front • Powdercoated Universal End brackets with matching end covers.
Length	<ul style="list-style-type: none"> • OBM ± 2 mm
Maximum size	<ul style="list-style-type: none"> • Awning Width OBM = 4000mm • Awning Drop = 3000mm
Colour	<ul style="list-style-type: none"> • White, Classic Cream, Paperbark, Woodland Grey, Monument & Night Sky
Ends & End Covers	<ul style="list-style-type: none"> • Cassette Ends with internal brackets attached. Must be the same colour as the Outdoor Cassette • Must be attached firmly
Assembly	<ul style="list-style-type: none"> • Pair of Powdercoated End brackets must be riveted on either ends of the Cassette. • Crank to be assembled on the control side End bracket. • A Hood Spacer block to be assembled on the idler End bracket. • Pivot, Pin & Plate to be attached to the Hood spacer block on the idler End bracket.

BOTTOM RAIL

Type	<ul style="list-style-type: none"> • Tapered Rectangular shaped in Aluminium • Use Small profile only. 			
Colour	<ul style="list-style-type: none"> • As per Work Order • Standard colour – Anodised, White, Classic Cream, Paperbark, Woodland Grey, Monument & Night Sky. or • Powder coated to colour as specified <p>Note: Powder coating charges to apply if applicable.</p>			
				Tolerance
Actual Length	<u>From OBM</u>	CRANK	MOTORISED	
	S/steel brackets	Less 74mm	Less 66mm	± 3 mm
	Cassette	Less 80mm	Less 80mm	
Weight Bar	<ul style="list-style-type: none"> • Bottom Rail must be weighted • For correct Steel Shaft length: B/Rail – 90 mm • Shaft must be inserted into the Bottom Rail and secured to prevent rattling. 			

AUTHORISED BY:	Andrew Rundle (Sales Manager)	REVIEWER:	Mark Khong		Page:	5 of 11
	Krishna (Prod. Manager)	Review Date:	Nov 2020	NOT VALID after:	Nov 2020	

PRODUCT:	WIRE GUIDE AWNINGS	DEPARTMENT:	Outdoor		
MS No.:	MS C 5.14	ISSUE DATE:	Dec 2019	Issue No:	14

TOP ROLLER	End caps	<ul style="list-style-type: none"> 1 pair of bottom rail End-caps 1 pair of Tie-downs inserted. End-caps to be firmly attached (screwed) to the Bottom Rail 			
	Type	63 mm galvanised steel tube			
					Tolerance
GUIDE WIRE	Actual Cut Length	<u>From OBM</u>	CRANK	MOTORISED	
		S/steel brackets	Less 73mm	Less 65mm	± 3 mm
		Cassette	Less 84mm	Less 75mm	
	Diameter	<ul style="list-style-type: none"> 63.5mm (width<=4000mm) & 70mm (4000<width<=4200mm) 			
	Spring Assembly	<ul style="list-style-type: none"> No Spring Assembly used 			
FINISHING—	Ends	<ul style="list-style-type: none"> Drive End (63 mm) must be inserted into the Control end for crank operation. Correct motor and crown to be inserted into the Control end for motorised operation. Idler End must be firmly attached to the other end—with an Idler with hole (63 mm). 			
	Type	Stainless steel braded cable – 3.2 mm			
FINISHING—	Actual Cut Length	<ul style="list-style-type: none"> Blind Drop – 48mm. 			± 3 mm
	Diameter	<ul style="list-style-type: none"> 3.2 mm 			
	Fabric	<ul style="list-style-type: none"> There must be no holes or dirty marks Any fabric flaws must be within the acceptable range identified in the Flaws folder at the Cutting Tables For patterned fabric—all blinds in the same order must be made with the same fabric orientation All Blinds of the same size, in the same Order, must be cut the same—that is, so the pattern matches All Blinds in the same Order must be centred on the same part of the pattern 			
	Squareness	<ul style="list-style-type: none"> Tolerance of ± 3 mm 			

AUTHORISED BY:	Andrew Rundle (Sales Manager)	REVIEWER:	Mark Khong		Page:	6 of 11
	Krishna (Prod. Manager)	Review Date:	Nov 2020	NOT VALID after:	Nov 2020	

PRODUCT:	WIRE GUIDE AWNINGS	DEPARTMENT:	Outdoor		
MS No.:	MS C 5.14	ISSUE DATE:	Dec 2019	Issue No:	14

Sewing	<ul style="list-style-type: none"> All stitching must be straight—with no more than ± 1 mm deviation over 1 metre of sewing <div style="text-align: center;"> </div> <ul style="list-style-type: none"> 3.6mm Spline to the top & 6mm black spline at the bottom. Spline must be sewn on straight There must be no gaps or loose stitching All Canvas type fabrics must have a 30mm hem on each side All Screen type fabrics will have no hems on the side. The sides will be sealed by the Ultrasonic cutting tool. All Screen fabrics to be Ultrasonically cut to seal the edges Minimum Panel size = 300mm Panel join overlap = 30mm Only “C” OR “D” Joins are acceptable if a join is required: <div style="text-align: center;"> </div>
Binding	<ul style="list-style-type: none"> No Bindings used.

Construction	<ul style="list-style-type: none"> The Outdoor Blind must fit within the stainless steel brackets. There must be a Roller attached to the top spline There must be a Bottom Rail attached to the bottom spline
Function	<ul style="list-style-type: none"> Blind must pull up & down smoothly Blind must roll up straight

COMPONENTS INCLUDED

Top Brackets	<p>S/steel brackets: 1 pair of stainless steel Universal Fixing Brackets (65 mm), with stainless steel wire guide Top Bush attached.</p> <p>Outdoor Cassette: End brackets riveted to the cassette.</p>
---------------------	---

AUTHORISED BY:	Andrew Rundle (Sales Manager)	REVIEWER:	Mark Khong		Page:	7 of 11
	Krishna (Prod. Manager)	Review Date:	Nov 2020	NOT VALID after:	Nov 2020	

PRODUCT:	WIRE GUIDE AWNINGS	DEPARTMENT:	Outdoor		
MS No.:	MS C 5.14	ISSUE DATE:	Dec 2019	Issue No:	14

2.7:1 Gear box – for crank operation	<ul style="list-style-type: none"> • As per Work Order: <ul style="list-style-type: none"> – Need to specify control side and top / face fix. – Colour: Off White and Charcoal – Control side: <ul style="list-style-type: none"> ➤ S/steel brackets: Gearbox attached to top bracket with s/steel M6 x 16 CSK – allen head screws. The gearbox is attached with the operation arm tilted forward. ➤ Outdoor Cassette: Gear Box attached to the End bracket with s/steel M6 x 16 CSK – allen head screws.
Quick fit Wire guide set	<ul style="list-style-type: none"> • 1 set unassembled – fitter must assemble these on site. <ul style="list-style-type: none"> – 1 pair of Eye nut caoch screw fitted to the b/rail end caps – (Top bush) 1 pair of s/steel Barrel nut 17mm M6 thread in conjunction with Rapid lock Swageless stud M6 x 35. – (Bottom bush) Rapid lock Swageless stud M6 x 15.
Mounting bracket for motor	<ul style="list-style-type: none"> • Somfy – universal Zamack bracket • Alpha – awning motor plate
S/Steel Pivot Pin and Plate	<ul style="list-style-type: none"> • 1 set attached to the other bracket.
Hood Spacer Block (Cassette only)	<ul style="list-style-type: none"> • 1 Hood Spacer Block
S/Steel Cable	<ul style="list-style-type: none"> • As per Work Order <ul style="list-style-type: none"> - 1 pair of s/steel cable • The cables are coiled, strapped and bagged with the appropriate fixing style supplied.
Fixing styles for s/steel cable	<ul style="list-style-type: none"> • Wire Guide L bracket - most common way used for anchoring the bottom bush back to the wall or post. • Deck Plate.- for anchoring into wooden decks.
Breeching Staple & Webbing Straps	<ul style="list-style-type: none"> • 1 pair of breeching staples • 1 pair of webbing straps – default 350 mm

AUTHORISED BY:	Andrew Rundle (Sales Manager)	REVIEWER:	Mark Khong		Page:	8 of 11
	Krishna (Prod. Manager)	Review Date:	Nov 2020	NOT VALID after:	Nov 2020	

PRODUCT:	WIRE GUIDE AWNINGS	DEPARTMENT:	Outdoor		
MS No.:	MS C 5.14	ISSUE DATE:	Dec 2019	Issue No:	14

1. Options

	Standard	Options
Weave orientation	Standard	Standard
Canvas Finish	No flap	No flap
Lift Control	Crank-operated	Motorised
Gear Box	2.7:1	9:1
Cassette	Optional	Optional
Guide Length	Blind Drop or as requested	Blind Drop or as requested
Wire Guide Brackets	L Brackets, Deck Plate	L Brackets, Deck Plate
Crank Handle	None	900mm, 1200mm, 1500mm 1800mm, 2100mm, 2400, 2700, 3000mm
Control Side	Must specify: Left or Right <i>(when looking from outside)</i>	Must specify: Left or Right <i>(when looking from outside)</i>
Top Bracket Fixing	Must specify: Top fixed or Face fixed	Must specify: Top fixed or Face fixed
Webbing strap	350 (standard), 450 and 550 mm	350 (standard), 450 and 550 mm
Extra Componentry	None	Remote controls, switches, light and wind sensors
Roll Type	<ul style="list-style-type: none"> Underroll only 	
Fabric type & colour	<ul style="list-style-type: none"> As per the Work Order 	
Binding type & colour	<ul style="list-style-type: none"> None 	
Cassette colour	<ul style="list-style-type: none"> As per the Work Order 	
Bottom Rail colour	<ul style="list-style-type: none"> As per the Work Order 	

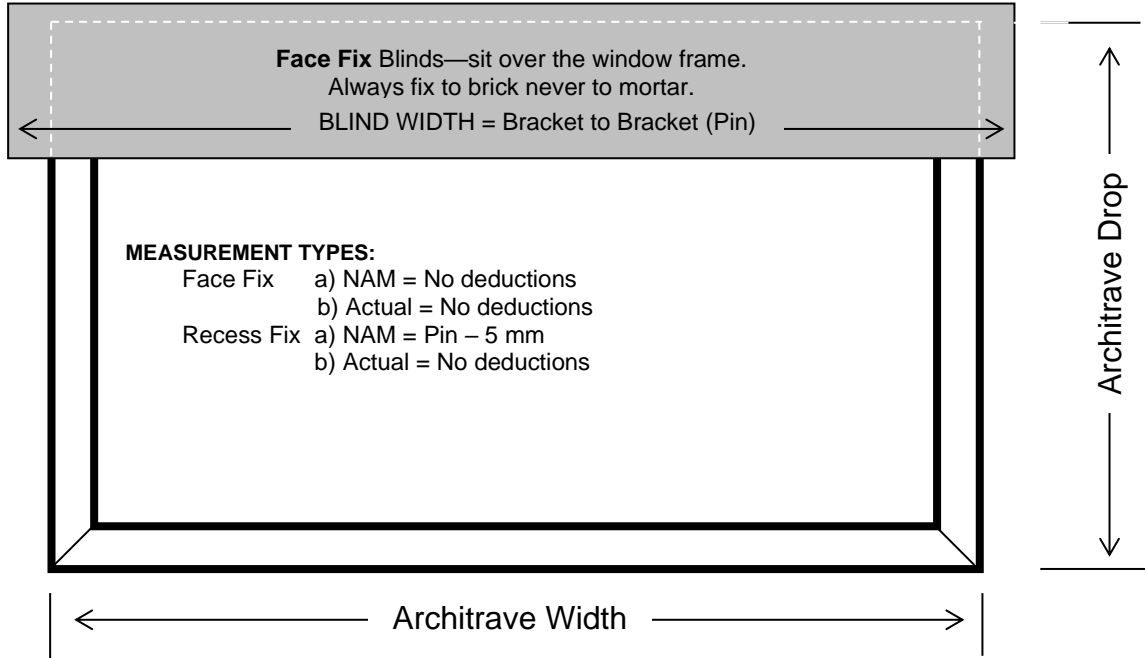
NOTE—Options should only be used if they are noted on the Work Order. Otherwise STANDARD fittings must be used.

AUTHORISED BY:	Andrew Rundle (Sales Manager)	REVIEWER:	Mark Khong		Page:	9 of 11
	Krishna (Prod. Manager)	Review Date:	Nov 2020	NOT VALID after:	Nov 2020	

PRODUCT:	WIRE GUIDE AWNINGS	DEPARTMENT:	Outdoor		
MS No.:	MS C 5.14	ISSUE DATE:	Dec 2019	Issue No:	14

3. Standard Measurement Terminology

This product does not come with a hood, so measurements are taken from bracket to bracket. This is normally known as the PIN measure.



Type	Blind Type	Width (mm)	Drop (mm)
Brick House** <i>(Top brackets will sit over the top of the window)</i>	CRANK AND MOTORISED	<ul style="list-style-type: none"> Arch. Width + 150mm 	<i>If window goes to eaves:</i> <ul style="list-style-type: none"> Eave to top of Brick Sill <i>If brick courses over window:</i> <ul style="list-style-type: none"> From 2 brick courses above window to top of Brick Sill
Timber House <i>(Top brackets will sit on the Architrave)</i>	CRANK AND MOTORISED	<ul style="list-style-type: none"> Architrave Width 	<ul style="list-style-type: none"> Architrave Drop
Aluminium Windows <i>(no Archi-traves)</i>	CRANK AND MOTORISED	<ul style="list-style-type: none"> Window Width + 100mm 	<ul style="list-style-type: none"> Window Frame Drop

NOTE ~ - If there is no indication on the Order, it will be assumed that measurements given are PIN.

** Always fix to brick never to mortar.

OTHER NOTE: Colour may vary from dye lots to dye lot.

AUTHORISED BY:	Andrew Rundle (Sales Manager)	REVIEWER:	Mark Khong		Page:	10 of 11
	Krishna (Prod. Manager)	Review Date:	Nov 2020	NOT VALID after:	Nov 2020	

PRODUCT:	WIRE GUIDE AWNINGS	DEPARTMENT:	Outdoor		
MS No.:	MS C 5.14	ISSUE DATE:	Dec 2019	Issue No:	14

4. Packaging & Labelling

- Each Blind will be individually packed in a polythene bag.
- Small components are sealed in a separate plastic bag. A Fitting Instructions leaflet is to be supplied for every order.
- Components bag & crank handles are held together with cable ties.

The following additional packaging applies to delivery by external Courier only:

- A maximum of 2 Blind packs are packaged together in a triangular cardboard box—cut to accommodate the Blind width.
- Blind packs will be taped together—not too tightly—to minimise movement during transport.
- Packages may contain scrap packaging materials, such as bubble wrap and cardboard that is used to stop movement of Blinds within the package during transport.
- Each cardboard package will be labelled with the Customer's name & the Customer Order Number.



AUTHORISED BY:	Andrew Rundle (Sales Manager)	REVIEWER:	Mark Khong		Page:	11 of 11
	Krishna (Prod. Manager)	Review Date:	Nov 2020	NOT VALID after:	Nov 2020	