

DOCUMENT:	Pivot Arm Awning		Issue Date:	Dec 2019	Page No:	1 of 8	
DOC No.:	MS C 12.7	Dept:	OUTDOOR	Review Date:	Nov 2020	Issue No:	7



Product Specification

MS C 12.7 Pivot Arm Awning

Orig. Issue Date:		Reviewer:	Krishna Ratnakaram
--------------------------	--	------------------	--------------------

Location	Computer File:	\\Common\contract\AA - Products\Outdoor Product Specification - MS C 12.7 Pivot Arm Awning
	Hard Copies:	<ul style="list-style-type: none"> ▪ Production Office (Master Copy) ▪ Outdoor Work Area File

Document Revisions—		
Date	Description of change	Originated by—
10 Oct 2012	Create Specification	Krishna
31 Oct 2012	Altered calculation of Arm Size/Projection & Sliding Rail length. Restricted Maximum Drop for Fixed Projection is 3100mm	Krishna
21 Feb 2012	Altered Maximum width from 4400mm to 3500mm	Krishna
12 Mar 2013	Included fabric suitability specification. Altered minimum projection from 300mm to 400mm	Krishna
Sep 2013	Removed Welding on the sides for Screen fabrics only	Krishna
Dec 2019	Added Cassette. Replaced 5 sided b/rail with Aluminium extruded Pivot front rail. Removed Roll form metal hood. Removed sliding rails	Krishna

Approval—			
Stakeholder	Position	Signature	Date
Krishna Ratnakaram	Product Manager		
Andrew Rundle	Marketing Manager		

DOCUMENT:	Pivot Arm Awning	Issue Date:	Dec 2019	Page No:	2 of 8
DOC No.:	MS C 12.7	Dept:	OUTDOOR	Review Date:	Nov 2020
				Issue No:	7



PRODUCT SPECIFICATION

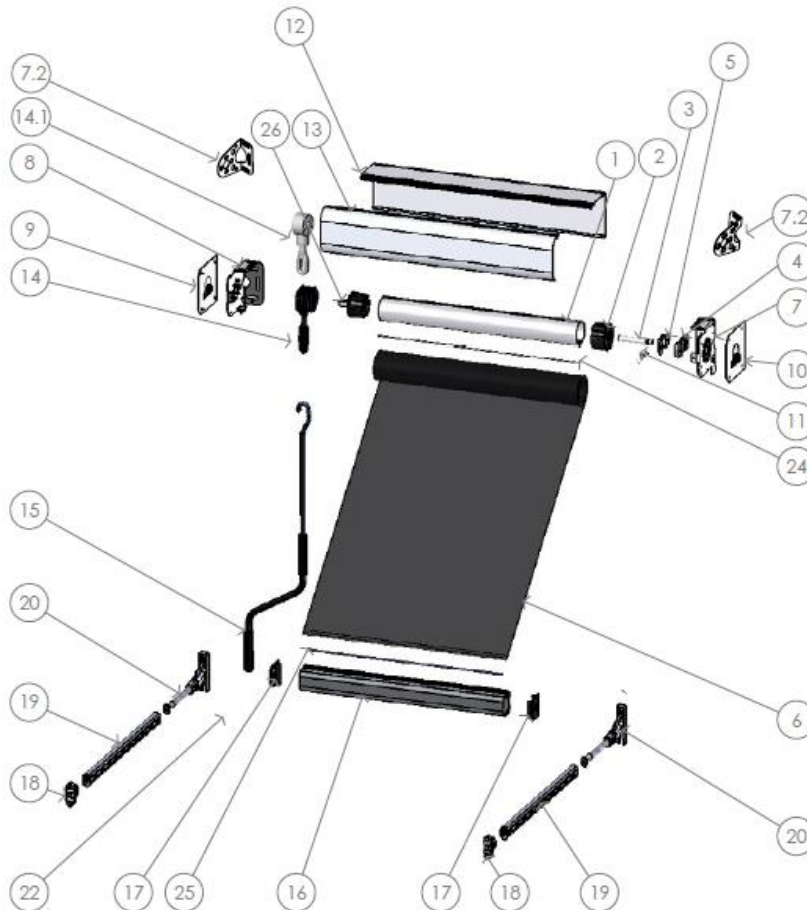
Product Name

Pivot Arm Awning

1. Scope

This specification covers the production of the following Blinds:

- Pivot Arm Awning



ID	PART NUMBER	DESCRIPTION	QTY	ID	PART NUMBER	DESCRIPTION	QTY
1	6.61.....	Top Roller Tube	1	13	6.90408..	Protecta Half Hooding Front	1
2	6.8016..	Idler End	1	14	6.8002..	9:1 Gearbox	1
3	6.851500	Pivot Pin	1	14.1	6.80021	2.7:1 Gearbox	1
4	6.9001605	Hood Spacer Block	1	15	6.800...	Crank Handle	1
5	6.851500	Pivot Plate	1	16	6.6895..	Pivot Front Rail	1
6	Fabric	1	17	6.689600	Pivot Front Rail End Cap	2
7	6.90405..	Protecta Bracket With Hood Tabs RH	1	18	6.68993.	Protecta Pivot Front Rail Support Assembly	2
7.2	6.85.....	Universal Stainless Steel 65mm Bracket	2	19	6.689058	Spring Arm Extrusion	2
8	6.90405..	Protecta Bracket With Hood Tabs LH	1	20	6.68993.	Spring	2
9	6.90404..	Protecta Bracket Cover LH	1	24	6.62801	3.6mm Spline	1
10	6.90404..	Protecta Bracket Cover RH	1	25	6.62806	6mm Spline - Plastic	1
11	6.851500	Plate Clip	1	26	6.8002..	Drive End	1
12	6.90408..	Protecta Hooding Back	1				

DOCUMENT:	Pivot Arm Awning		Issue Date:	Dec 2019	Page No:	3 of 8	
DOC No.:	MS C 12.7	Dept:	OUTDOOR	Review Date:	Nov 2020	Issue No:	7

2. General Specifications

BLIND DIMENSIONS	Minimum (mm)	Maximum (mm)
Width	550	3500
Drop	600	3100*

NOTES—

- **Minimum Width for any motorised awning is 750mm**
- ***Maximum drop in a Fixed Arm size/Projection is 3100mm as the maximum Arm size/Projection is 1500mm**
- Where blinds are **ordered outside this range**, customers must be referred to the Production Department. Blinds ordered that are outside this range should not be made without authorisation.
- OBM = Outside Box Measurement

CLOTH

Pattern	<ul style="list-style-type: none"> • As per Work Order • Pattern must be centred across the width of the Blind 	
Fabric suitability	<p><u>Note: There will be a sag in the fabric when projected outwards due to the weight of the fabric.</u></p> <ul style="list-style-type: none"> • Screen fabrics – No side hems OR joins • Canvas fabrics – Not recommended • Acrylic fabrics – Suitable with “C” OR “D” joins 	
Colour	<ul style="list-style-type: none"> • As per Work Order 	
Cut Cloth Width	<ul style="list-style-type: none"> • OBM (or PIN) • Tolerance: ± 3 mm 	
Cut Cloth Drop	<ul style="list-style-type: none"> • Drop + 400m 	
Spline to spline	<ul style="list-style-type: none"> • Drop + 200mm 	
Panel size	<ul style="list-style-type: none"> • Minimum width = 300mm 	
Scallop	<ul style="list-style-type: none"> • Standard finish is No Flap • If Scallop is requested it must be centred on fabric—avoid ‘duck tails’ where possible • Lowest point from Scallop to Spline Pocket = 160mm 	
Final Blind Width	With Cassette:	Tolerance
	<ul style="list-style-type: none"> • OBM – 84mm 	
Final Blind Drop	No Cassette:	± 3 mm
	<ul style="list-style-type: none"> • PIN – 75mm 	
Final Blind Drop	<ul style="list-style-type: none"> • As per Work Order (measured to bottom of scallop) 	+ 200 mm - 100 mm

DOCUMENT:	Pivot Arm Awning		Issue Date:	Dec 2019	Page No:	4 of 8	
DOC No.:	MS C 12.7	Dept:	OUTDOOR	Review Date:	Nov 2020	Issue No:	7

2. General Specifications

CASSETTE

(WHERE FITTED)

Profile	<ul style="list-style-type: none"> 2 piece. L shape back & Curved Front Powdercoated Universal End brackets with matching end covers.
Length	<ul style="list-style-type: none"> OBM \pm 2 mm
Maximum size	<ul style="list-style-type: none"> Awning Width OBM = 3500mm Awning Drop = 3100mm
Colour	<ul style="list-style-type: none"> White, Classic Cream, Paperbark, Woodland Grey, Monument & Night Sky
Ends & End Covers	<ul style="list-style-type: none"> Cassette Ends with internal brackets attached. Must be the same colour as the Outdoor Cassette Must be attached firmly
Assembly	<ul style="list-style-type: none"> Pair of Powdercoated End brackets must be riveted on either ends of the Cassette. Crank to be assembled on the control side End bracket. A Hood Spacer block to be assembled on the idler End bracket. S/steel Pivot, Pin & Plate to be attached to the Hood spacer block on the idler End bracket.

BOTTOM RAIL

Type	<ul style="list-style-type: none"> Extruded Aluminium Pivot Front rail 	
Colour	<ul style="list-style-type: none"> As per Work Order or Must match Canvas backing colour as closely as practical 	
Actual Rail Length	<p>With Cassette:</p> <ul style="list-style-type: none"> OBM – 80mm <p>Without Cassette:</p> <ul style="list-style-type: none"> PIN – 80mm 	<p>Tolerance</p> <p>\pm 3 mm</p>
End caps	<ul style="list-style-type: none"> 1 pair of Pivot front rail assembly cast brackets. Cast brackets must be firmly attached (riveted) to Bottom Rail 	

TOP ROLLER

Cutting		
Actual Roller Length	<p>With Cassette:</p> <ul style="list-style-type: none"> OBM – 84mm <p>No Cassette:</p> <ul style="list-style-type: none"> OBM – 73mm 	<p>Tolerance</p> <p>\pm 3 mm</p>
Diameter	63.5mm	

DOCUMENT:	Pivot Arm Awning	Issue Date:	Dec 2019	Page No:	5 of 8
DOC No.:	MS C 12.7	Dept:	OUTDOOR	Review Date:	Nov 2020
				Issue No:	7

2. General Specifications

Ends	<ul style="list-style-type: none"> • A 63mm Drive end to be firmly attached to the Roller on the control side for crank operation. • A 63.5mm Idler End with hole to be inserted into the Idler End.
-------------	--

PROJECTION

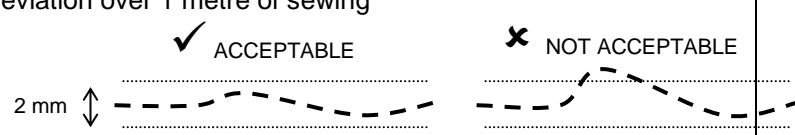
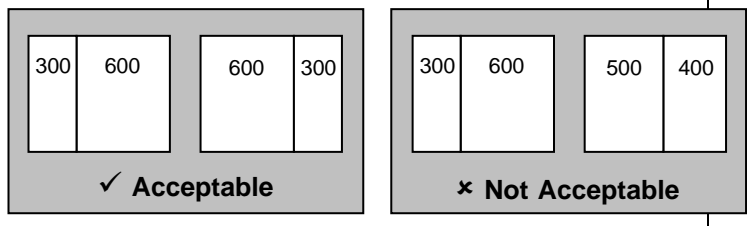
	<ul style="list-style-type: none"> • Minimum = 400mm; Maximum = 1500mm
Fixed Projection	<ul style="list-style-type: none"> • Projection = $(\text{Drop} - 110\text{mm})/2$ • Pivot Point: <ul style="list-style-type: none"> ➤ Fixed • Spring Arm <ul style="list-style-type: none"> ➤ Required = Two ➤ Extrusion Cut length = <u>Projection - 110mm</u> • Assembly: <ul style="list-style-type: none"> ➤ Heavy Duty Spring is at the pivot point and is orientated to ensure that the arms are always forcing downwards. ➤ Pivot front rail assembly cast brackets for Bottom rail on the other end per Arm

FINISHING—

Fabric	<ul style="list-style-type: none"> • There must be no holes or dirty marks • Any fabric flaws must be within the acceptable range identified in the Flaws folder at the Cutting Tables • For patterned fabric—all blinds in the same order must be made with the same fabric orientation • All Blinds of the same size, in the same Order, must be cut the same—that is, so the pattern matches • All Blinds in the same Order must be centred on the same part of the pattern
Squareness	<ul style="list-style-type: none"> • Tolerance of ± 3 mm

DOCUMENT:	Pivot Arm Awning	Issue Date:	Dec 2019	Page No:	6 of 8
DOC No.:	MS C 12.7	Dept:	OUTDOOR	Review Date:	Nov 2020
				Issue No:	7

2. General Specifications

FINISHING (CONT'D)	Sewing	<ul style="list-style-type: none"> All stitching must be straight—with no more than ± 1 mm deviation over 1 metre of sewing  <ul style="list-style-type: none"> Spline must be sewn on straight There must be no gaps or loose stitching All Canvas type fabrics must have a 30mm hem on each side All Screen fabrics to be Ultrasonically cut to seal the edges All Screen type fabrics will have no hems on the side unless there is a join the fabric. Minimum Panel size = 300mm Panel join overlap = 30mm Joins can be anywhere on Blind—as long as: <ul style="list-style-type: none"> panels in Blinds from the same Order are same width: 
	Binding	<ul style="list-style-type: none"> The Bottom Flap of all Blinds must be finished with either Binding or a Hem Binding type—as per Work order Binding colour—as per Work Order Thread used must match the Binding colour
	Construct- ion	<ul style="list-style-type: none"> The Canvas Blind must fit within the Head Box There must be a Crank Roller attached to the top spline There must be a Bottom Rail attached to the bottom spline Optional Bottom Flap (scalloped or flat edge) extending at least 160mm beyond the bottom spline The Bottom Flap must be finished with Binding or a Hem
	Function	<ul style="list-style-type: none"> Blind must pull up & down smoothly Blind must roll up straight

COMPONENTS INCLUDED

Brackets	<ul style="list-style-type: none"> 1 pair of 65mm S/Steel Brackets (if no Cassette)
Pivot pin & Plate	<ul style="list-style-type: none"> 1 set of S/steel pivot pin & plate
Gear box	<ul style="list-style-type: none"> 2.7:1 gear box in white

DOCUMENT:	Pivot Arm Awning		Issue Date:	Dec 2019	Page No:	7 of 8	
DOC No.:	MS C 12.7	Dept:	OUTDOOR	Review Date:	Nov 2020	Issue No:	7

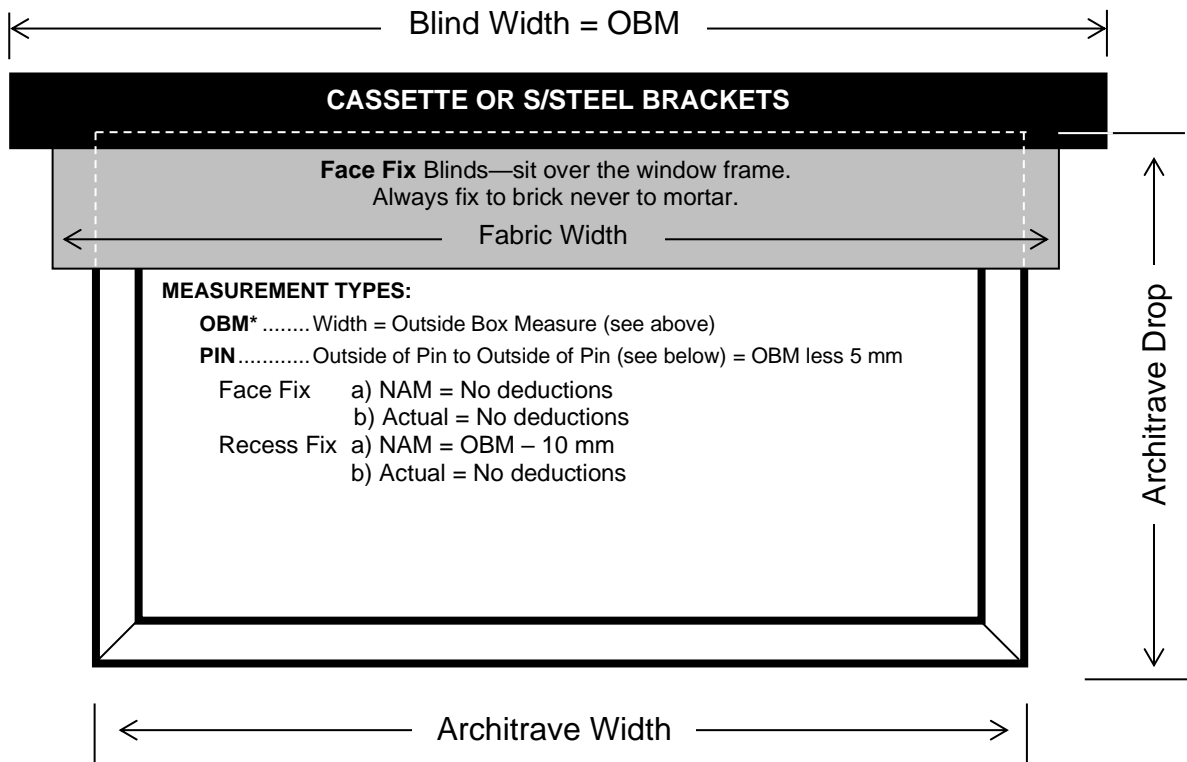
3. Options

	Standard	Available Options
Weave orientation	Standard	None
Roll Type	Underroll	None
Cloth Finish	No Flap	Straight Flap Hemmed Straight Flap with Bias Scallop with Bias
Lift Control	Crank	Motorised
Cassette	No Cassette	Cassette
Crank Handle	None	As requested
Extra Componentry	None	See Appendix 1 for full list. Only include when ordered.
Fabric type & colour	<ul style="list-style-type: none"> As per the Work Order 	
Binding type & colour	<ul style="list-style-type: none"> As per the Work Order 	
Cassette colour	<ul style="list-style-type: none"> As per the Work Order 	
Bottom Rail colour	<ul style="list-style-type: none"> As per the Work Order 	

NOTE—Options should only be used if they are noted on the Work Order. Otherwise STANDARD fittings must be used.

* Railroading will void the warranty of the blind. Please refer to Contract Blinds Fabric Suitability Chart.

4. Standard Measurement Terminology



DOCUMENT:	Pivot Arm Awning		Issue Date:	Dec 2019	Page No:	8 of 8	
DOC No.:	MS C 12.7	Dept:	OUTDOOR	Review Date:	Nov 2020	Issue No:	7

Type	Width (mm)	Drop (mm)
Brick House** <i>(Headbox will sit over the top of the window)</i>	<ul style="list-style-type: none"> Architrave Width + 150mm 	<i>If window goes up to the eaves:</i> <ul style="list-style-type: none"> Eave Line to top of Brick Sill <i>If there are brick courses above the window:</i> <ul style="list-style-type: none"> From 2 brick courses above window to top of Brick Sill
Timber House <i>(Headbox will sit on the Architrave)</i>	<ul style="list-style-type: none"> Architrave Width 	<ul style="list-style-type: none"> Architrave Drop
Aluminium Windows (no Architraves)	<ul style="list-style-type: none"> Window Frame Width + 100mm 	<ul style="list-style-type: none"> Window Frame Drop

NOTES ~

* If there is no indication on the Order, it will be assumed that the measurements given are OBM sizes.

** Always fix to brick never to mortar.

OTHER NOTE: Colour may vary from dye lots to dye lot.

TIPS:

- Always use a reliable metal tape measure
- Take at least three measurements across the window or door & use the smallest one
- Before completing the Order, make sure there are no obstructions that could interfere with fitting the Blind

5. Packaging & Labelling

- Each Blind will be individually packed in a polythene bag. A Fitting Instructions leaflet is to be supplied for every order.
- Small components are sealed in a separate plastic bag.
- Components bag, Guides & Pull-down Rod are held together with cable ties.

The following additional packaging applies to delivery by external Courier only:

- A maximum of 2 Blind packs are packaged together in a triangular cardboard box—cut to accommodate the Blind width.
- Blind packs will be taped together—not too tightly—to minimise movement during transport.
- Packages may contain scrap packaging materials, such as bubble wrap and cardboard that is used to stop movement of Blinds within the package during transport.
- Each cardboard package will be labelled with the Customer's name & the Customer Order Number.